



APPLICATION:

## Cables Through Flexible & Rigid Wall

ID:

**SL-GA:  
SP-FW/RW-E-01****INFORMATION:**

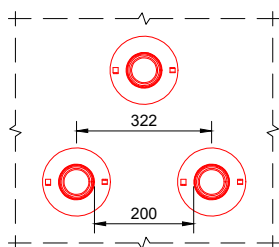
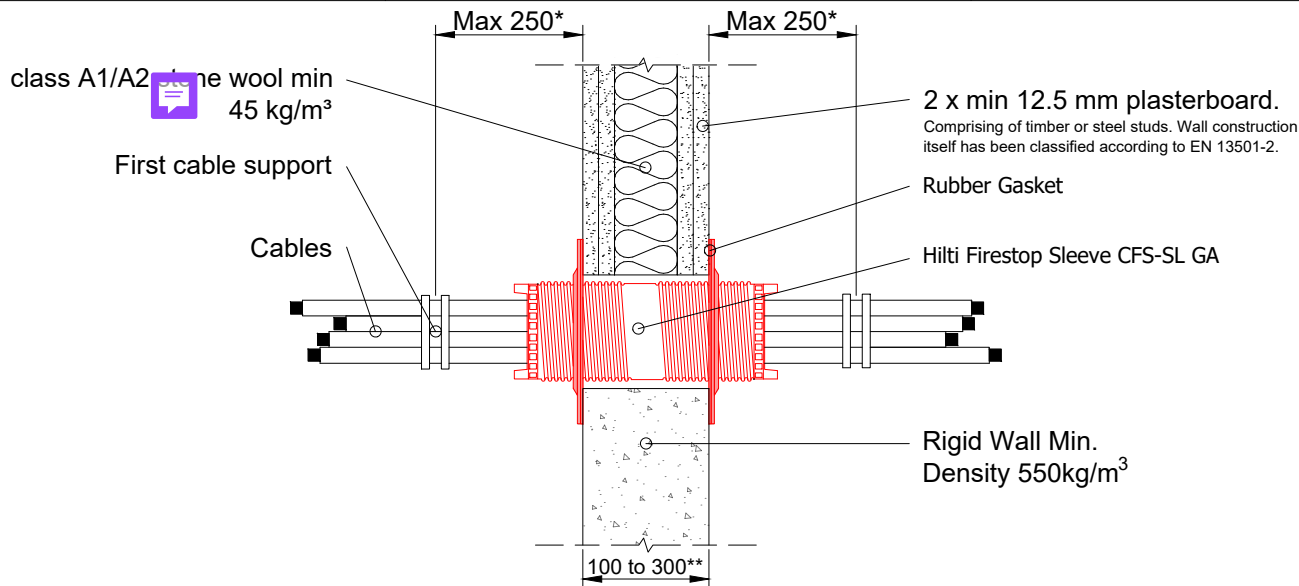
- Not to scale
- All units are in millimetres
- Tested according EN 1366-3
- [Approval ETA - 20-1234](#)

**CFS-SL GA**

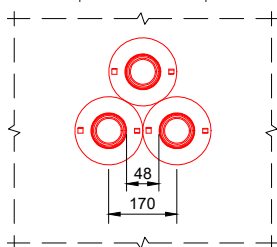
REV:

**01**

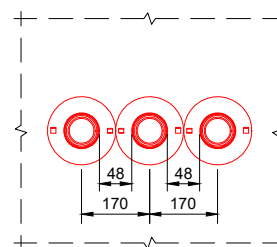
DATE:

**03/2025****Fire Rating up to EI 120****Page 1/2**

200mm (horizontal/vertical distance between openings)



Zero distance (horizontal/vertical distance between flanges cluster)



Zero distance (horizontal/vertical distance between flanges linear)

Device	Opening Ø
CFS-SL GA S	63 - 73 mm
CFS-SL GA M/L	113 - 122 mm

Description	200mm dist between Flanges		0mm dist between Flanges	
	CFS-SL GA S	CFS-SL GA M/L	CFS-SL GA S	CFS-SL GA M/L
Blank Device	EI 120	EI 120	EI 120	EI 90
All sheathed cables ≤ 21 mm	EI 90	EI 90	EI 60	EI 90
All sheathed cables ≤ 50 mm	-	EI 90	-	EI 60
All sheathed cables ≤ 80 mm	-	EI 60	-	EI 60
Cable bundles ≤ 36 mm	EI 90	-	EI 90	-
All sheathed cables ≤ 21 mm	-	EI 90	-	EI 60
Cable bundles ≤ 86 mm	-	EI 90	-	EI 60
All sheathed cables ≤ 21 mm	-	EI 90	-	EI 60
100% filled device with cables ≤ 21 mm	EI 60	EI 90	EI 60	EI 60
100% filled device with cables ≤ 80 mm	-	-	-	EI 60

(\*) First support and ancillary products should be capable of achieving the same fire performance as the seal and supporting structure.

(\*\*) **CFS-SL GA S/M:** Minimum thickness 100mm & maximum thickness 200 mm  
(Maximum thickness: 180mm if **CFS-SL GA M** in combination with Gangplate)  
**CFS-SL GA L:** Minimum thickness 200mm & maximum thickness 300 mm  
(Maximum thickness: 280mm if **CFS-SL GA L** in combination with Gangplate)

1. The application limits on this detail are for guidance purposes only. For more detailed information based on the full range of available test results please contact the Hilti Technical Advisory Service.
2. The product and application has been assessed as a minimum to the BS 476 standard. It may have additional European and worldwide testing. Please contact Hilti for further information.
3. All installations should be carried out in accordance with Hilti's installation instructions and by competent & experienced installers using Hilti branded products.
4. All services are to be correctly and adequately supported to prevent collapse and distortion.

Hilti (Gt. Britain) Limited | No 1, Circle Square | 3 Symphony Park | Manchester | M1 7FS

Freephone: 0800 886 100 | Website: [www.hilti.co.uk](http://www.hilti.co.uk)

**LEGAL NOTICE:** This template contains Hilti Intellectual Property which is legally protected, including Community registration of Hilti trademarks. For use only by Hilti customers and in conjunction with Hilti products. No third party use/products is authorised and breaches Hilti's intellectual property rights. Hilti accepts no responsibility for unauthorized use and reserves all rights to take legal action to enforce its rights in law.