



APPLICATION:

## Cables Through Rigid Floor

ID:

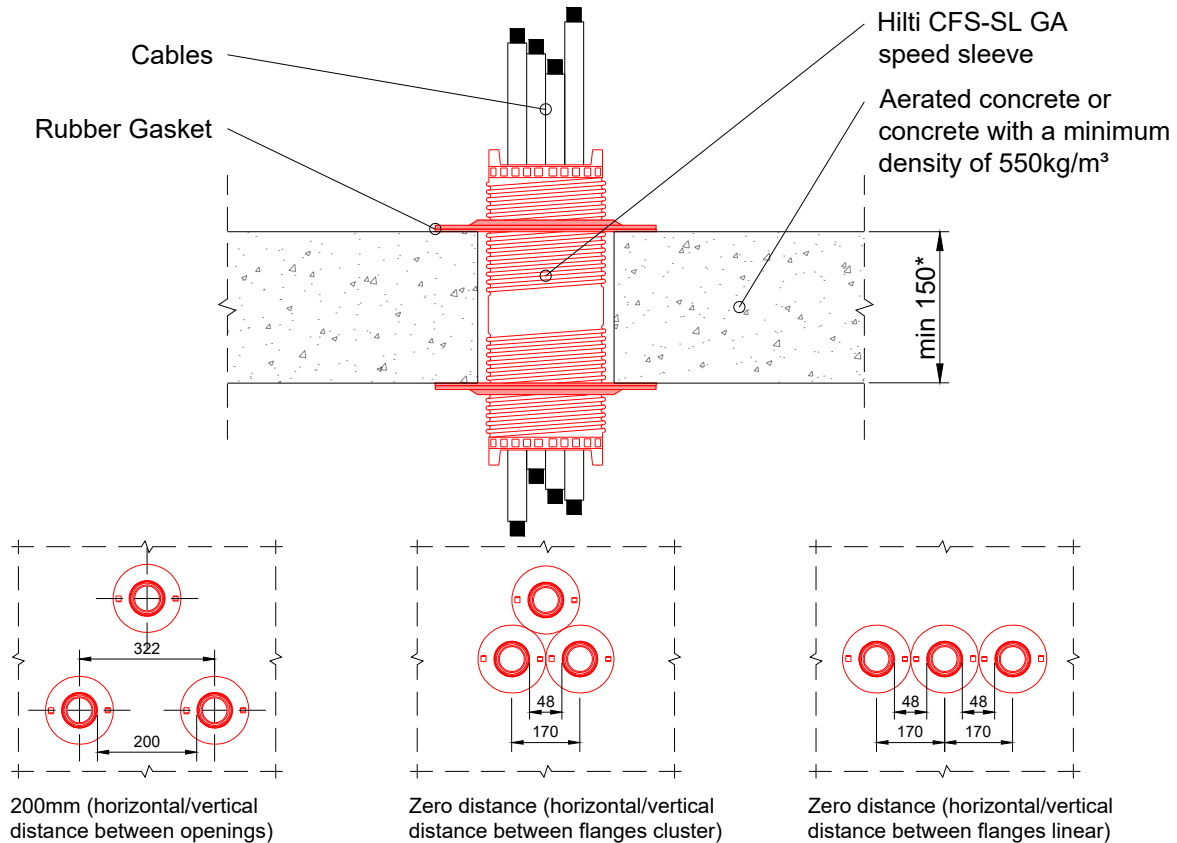
**SL-GA:  
SP-RF-E-01****INFORMATION:**

- Not to scale
- All units are in millimetres
- Tested according EN 1366-3
- [Approval ETA - 20-1234](#)

**CFS-SL GA**

REV:

DATE:

**01****03/2025****Fire Rating up to EI 180****Page 1/1**

Device	Opening Ø
CFS-SL GA S	63 - 73 mm
CFS-SL GA M/L	113 - 122 mm

Description	CFS-SL GA S	CFS-SL GA M/L
Blank Device	EI 180	EI 180
All sheathed cables ≤ 21 mm	EI 180	EI 180
All sheathed cables ≤ 50 mm	-	EI 120 <sup>5)</sup>
All sheathed cables ≤ 80 mm	-	EI 60
Cable bundles ≤ 36 mm All sheathed cables ≤ 21 mm	EI 180	-
Cable bundles ≤ 86 mm All sheathed cables ≤ 21 mm	-	EI 120
100% filled device with cables ≤ 21 mm	EI 120	-
100% filled device with cables ≤ 80 mm	-	EI 120

**(\*) Floors:**

- Minimum thickness 150mm & maximum thickness 200mm (CFS-SL GA S/M)  
Minimum thickness 200mm & maximum thickness 300mm (CFS-SL GA L)
- Aerated concrete or concrete with a minimum density of 550kg/m³

1. The application limits on this detail are for guidance purposes only. For more detailed information based on the full range of available test results please contact the Hilti Technical Advisory Service.

2. The product and application has been assessed as a minimum to the BS 476 standard. It may have additional European and worldwide testing. Please contact Hilti for further information.

3. All installations should be carried out in accordance with Hilti's installation instructions and by competent & experienced installers using Hilti branded products.

4. All services are to be correctly and adequately supported to prevent collapse and distortion.

Hilti (Gt. Britain) Limited | No 1, Circle Square | 3 Symphony Park | Manchester | M1 7FS

Freephone: 0800 886 100 | Website: [www.hilti.co.uk](http://www.hilti.co.uk)