



APPLICATION:

**Metal Pipes with combustible
insulation in Flexible Wall th. ≥ 75 mm**

ID:

**CFS-IS:
FW/RW-M-05****INFORMATION:**

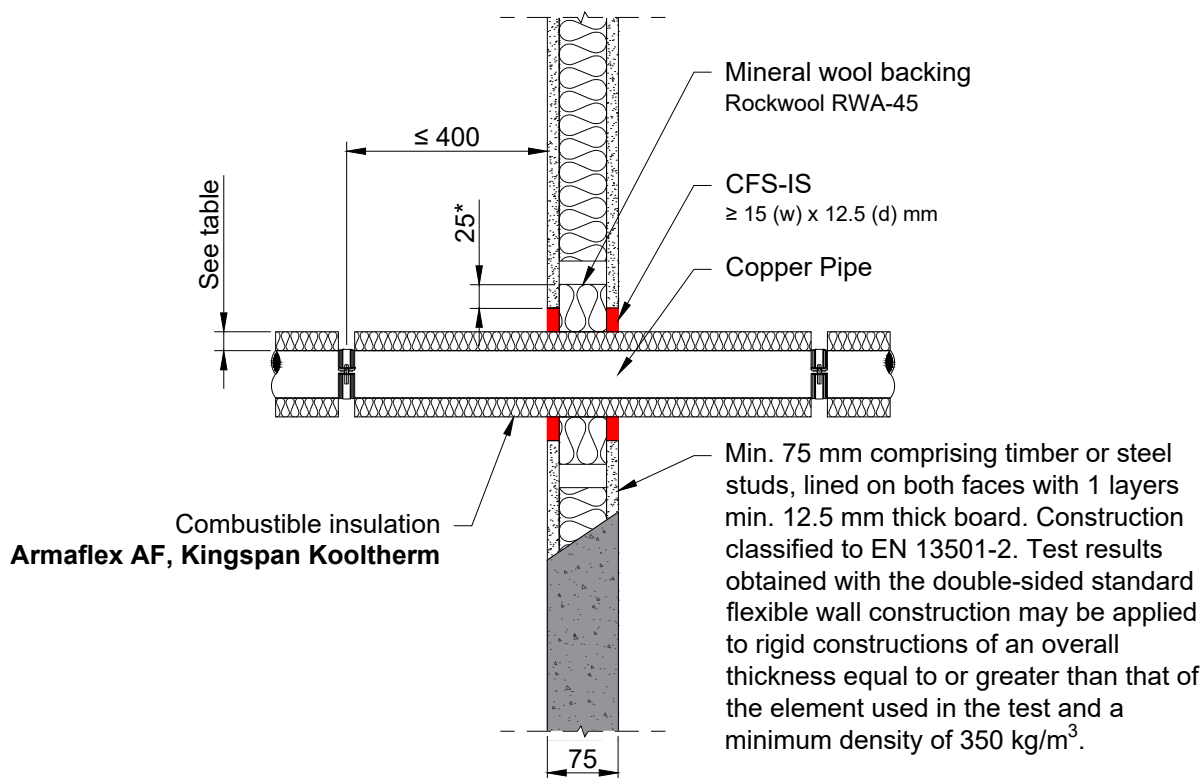
- Not to scale
- All units are in millimetres
- Tested according EN 1366-3
- Classification report
FIRES-CR-259-25-AUPE

CFS-IS

REV:

01

DATE:

11/2025**Fire Rating: up to EI 60 C/U****Page 1/1****Notes:**

- (*) The stone wool backing is applied to full depth inside the wall, overlapping the opening by 25 mm, type Rockwool RWA-45
- All services are passing through the penetration seals, perpendicular to the supporting construction.
- Distances between service openings ≥ 100 mm
- Annular gap ≥ 15 mm
- Distance between Hilti CFS-IS
- Seal edge ≥ 15 mm
- Maximum seal size (150 x 150) mm (width x height)
- **Maximum distance to 1st rigid support: ≤ 400 mm**

Brand and Type	Pipe \varnothing	Pipe Wall Thickness	Continued sustained insulation thickness	Classification
Armacell UK, Armaflex AF-CO	$\varnothing \leq 12$	≥ 0.6	9 to 32	EI 60 C/U
Armacell UK, Armaflex AF-CO	$\varnothing \leq 54$	≥ 1.2	13 to 32	EI 60 C/U
Kingspan, Kooltherm	$\varnothing \leq 12$	≥ 0.6	20 to 40	EI 60 C/U
Kingspan, Kooltherm	$\varnothing \leq 54$	≥ 1.2	20 to 40	EI 45 C/U
Kingspan, Kooltherm	$\varnothing \leq 54$	≥ 1.2	20	EI 60 C/U

1. The application limits on this detail are for guidance purposes only. For more detailed information based on the full range of available test results please contact the Hilti Technical Advisory Service.

2. The product and application has been assessed as a minimum to the BS 476 standard. It may have additional European and worldwide testing. Please contact Hilti for further information.

3. All installations should be carried out in accordance with Hilti's installation instructions and by competent & experienced installers using Hilti branded products.

4. All services are to be correctly and adequately supported to prevent collapse and distortion.

Hilti (Gt. Britain) Limited | No 1, Circle Square | 3 Symphony Park | Manchester | M1 7FS

Freephone: 0800 886 100 | Website: www.hilti.co.uk

LEGAL NOTICE: This template contains Hilti Intellectual Property which is legally protected, including Community registration of Hilti trademarks. For use only by Hilti customers and in conjunction with Hilti products. No third party use/products is authorised and breaches Hilti's intellectual property rights. Hilti accepts no responsibility for unauthorized use and reserves all rights to take legal action to enforce its rights in law.