



APPLICATION:

**Blank Seal  
in Flexible Wall th.  $\geq 75$  mm**

ID:

**CFS-D 25:  
FW/RW-E-02****INFORMATION:**

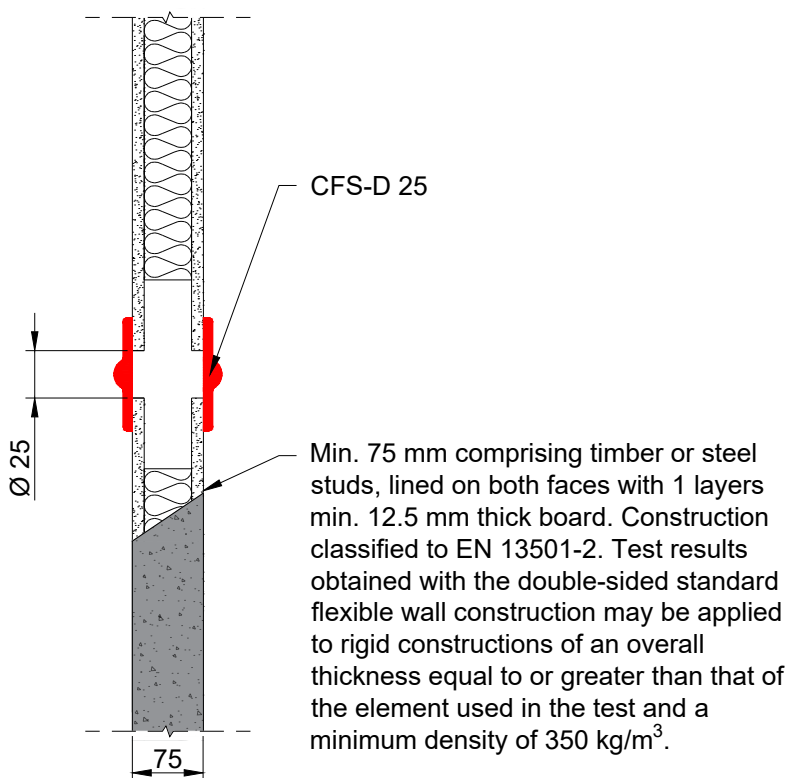
- Not to scale
- All units are in millimetres
- Tested according EN 1366-3
- Classification report  
FIRES-CR-259-25-AUPE

**CFS-D 25**

REV:

**01**

DATE:

**11/2025****Fire Rating: EI 45****Page 1/1****Notes:**

- All services are passing through the penetration seals, perpendicular to the supporting construction.

Service	Max. Opening	Classification
Blank Seal	Ø 25	EI 45

1. The application limits on this detail are for guidance purposes only. For more detailed information based on the full range of available test results please contact the Hilti Technical Advisory Service.
2. The product and application has been assessed as a minimum to the BS 476 standard. It may have additional European and worldwide testing. Please contact Hilti for further information.
3. All installations should be carried out in accordance with Hilti's installation instructions and by competent & experienced installers using Hilti branded products.
4. All services are to be correctly and adequately supported to prevent collapse and distortion.

Hilti (Gt. Britain) Limited | No 1, Circle Square | 3 Symphony Park | Manchester | M1 7FS

Freephone: 0800 886 100 | Website: [www.hilti.co.uk](http://www.hilti.co.uk)

**LEGAL NOTICE:** This template contains Hilti Intellectual Property which is legally protected, including Community registration of Hilti trademarks. For use only by Hilti customers and in conjunction with Hilti products. No third party use/products is authorised and breaches Hilti's intellectual property rights. Hilti accepts no responsibility for unauthorized use and reserves all rights to take legal action to enforce its rights in law.