



APPLICATION:

Combustible pipes in Flexible wall 100 mm

ID:

CP645:FW-100-M-01

INFORMATION:

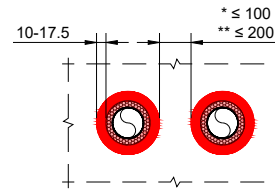
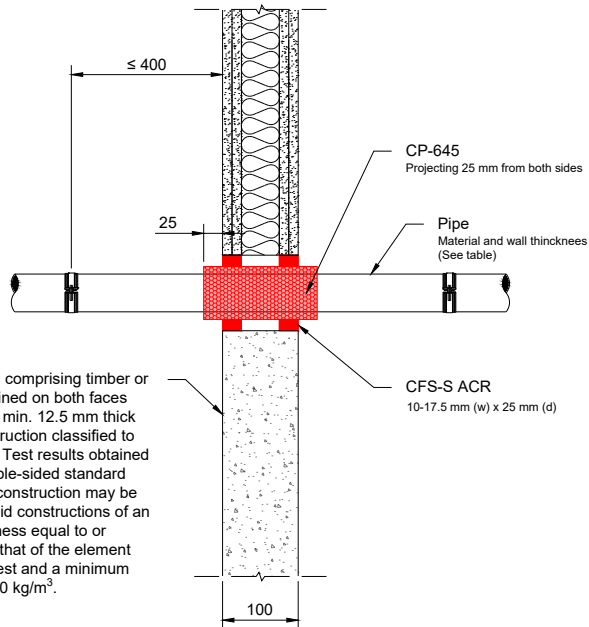
- Not to scale
- All units are in millimetres
- Tested according EN 1366-3
- [Classification CR-181-25-AUPE](#)

CP-645

REV:

01

DATE:

10/2025**Fire Rating: up to EI 120 - E 120****Page 1/1**

- * ≤ 100 mm to other penetration seals.
- ** ≤ 200 mm to other openings.

Notes:

- All services are passing through the penetration seals, perpendicular to the supporting construction.
- **Maximum distance to 1st rigid support: ≤ 400 mm.**
- Intumescent fire sleeve cut crosswise to the correct length and longitudinally as per the diameter of individual service.

Material	Diameter	Wall Thickness	CP-645 Ø	Classification	
PVC-U (in accordance with EN 1329-1, EN 1453-1, EN ISO 15493 and EN ISO 1452-2 and for pipes made of PVC-C in accordance with EN 1566-1, EN ISO 15493 and EN ISO 15877-2)	Ø ≤ 40	1.8	42	EI 120 U/C	E 120 U/C
	Ø ≤ 40	1.8	42	EI 120 U/U	E 120 U/U
	Ø ≤ 110	4.2	159	EI 120 U/C	E 120 U/C
	Ø ≤ 110	4.2	108	EI 60 U/U	E 60 U/U
	Ø ≤ 110	6.6	108	EI 90 U/U	E 90 U/U
	Ø ≤ 110	4.2 - 6.6	108	EI 60 U/U	E 90 U/U
PE (in accordance with EN 1519-1, EN 12666-1, EN 12201-2 and EN ISO 15494, PE-X pipes in accordance with EN ISO 15875-2, ABS pipes in accordance with EN 1455-1 and EN ISO 15493 as well as SAN+PVC pipes in accordance with ISO 19220)	Ø 40	3.0	42	EI 120 U/U	E 120 U/U
	Ø 110	4.2	108	EI 90 U/U	E 90 U/U
	Ø 40	3.0	42	EI 120 U/C	E 120 U/C
	Ø 110	4.2 - 10.5	108	EI 60 U/C	E 90 U/C
C-PVC BlazeMaster	Ø 26.7	2.3	27	EI 120 U/C	E 120 U/C
	Ø 33.4	2.7	34	EI 120 U/C	E 120 U/C
	Ø 42.2	3.4	42	EI 120 U/C	E 120 U/C
	Ø 48.3	3.8	48	EI 120 U/C	E 120 U/C
	Ø 60.3	4.7	60	EI 120 U/C	E 120 U/C
C-PVC Spears FlameGuard	Ø 26.7	2.1	27	EI 120 U/C	E 120 U/C
	Ø 33.4	2.5	34	EI 120 U/C	E 120 U/C
	Ø 42.2	3.1	42	EI 120 U/C	E 120 U/C
	Ø 48.3	3.6	48	EI 120 U/C	E 120 U/C
	Ø 60.3	4.7	60	EI 120 U/C	E 120 U/C

1. The application limits on this detail are for guidance purposes only. For more detailed information based on the full range of available test results please contact the Hilti Technical Advisory Service.
2. The product and application has been assessed as a minimum to the BS 476 standard. It may have additional European and worldwide testing. Please contact Hilti for further information.
3. All installations should be carried out in accordance with Hilti's installation instructions and by competent & experienced installers using Hilti branded products.
4. All services are to be correctly and adequately supported to prevent collapse and distortion.

Hilti (Gt. Britain) Limited | No 1, Circle Square | 3 Symphony Park | Manchester | M1 7FS

Freephone: 0800 886 100 | Website: www.hilti.co.uk

LEGAL NOTICE: This template contains Hilti Intellectual Property which is legally protected, including Community registration of Hilti trademarks. For use only by Hilti customers and in conjunction with Hilti products. No third party use/products is authorised and breaches Hilti's intellectual property rights. Hilti accepts no responsibility for unauthorized use and reserves all rights to take legal action to enforce its rights in law.