



APPLICATION:

**Non-combustible pipes with
combustible insulation in
flexible wall 100 mm**

ID:

CP645:FW-100-M-02

INFORMATION:

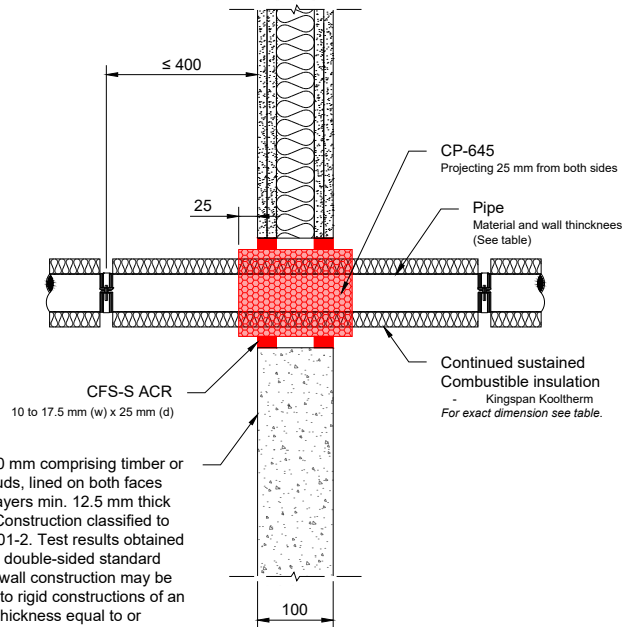
- Not to scale
 - All units are in millimetres
 - Tested according EN 1366-3
- [Classification CR-181-25-AUPE](#)

CFS-S ACR and CP-645

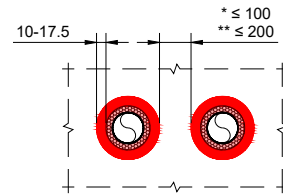
REV:

01

DATE:

10/2025**Fire Rating: up to EI 60 - E 90****Page 1/1**

Min. 100 mm comprising timber or steel studs, lined on both faces with 2 layers min. 12.5 mm thick board. Construction classified to EN 13501-2. Test results obtained with the double-sided standard flexible wall construction may be applied to rigid constructions of an overall thickness equal to or greater than that of the element used in the test and a minimum density of 350 kg/m³.



- * ≤ 100 mm to other penetration seals.
- ** ≤ 200 mm to other openings.

Notes:

- All services are passing through the penetration seals, perpendicular to the supporting construction.
- **Maximum distance to 1st rigid support: ≤ 400 mm.**
- Intumescent fire sleeve cut crosswise to the correct length and longitudinally as per the diameter of individual service.

Material	Diameter	Wall Thickness	CP-645 Ø	Insulation Thickness	Classification	
Copper pipe <small>Metal (hmp) with combustible insulation - Kingspan Kooltherm - CS</small>	Ø ≤ 12	≥ 0,6	54 - 102	20 - 40	EI 60 C/U	E 90 C/U
	Ø ≤ 54	≥ 1,2	102 - 140	20 - 40	EI 60 C/U	E 90 C/U

1. The application limits on this detail are for guidance purposes only. For more detailed information based on the full range of available test results please contact the Hilti Technical Advisory Service.
2. The product and application has been assessed as a minimum to the BS 476 standard. It may have additional European and worldwide testing. Please contact Hilti for further information.
3. All installations should be carried out in accordance with Hilti's installation instructions and by competent & experienced installers using Hilti branded products.
4. All services are to be correctly and adequately supported to prevent collapse and distortion.

Hilti (Gt. Britain) Limited | No 1, Circle Square | 3 Symphony Park | Manchester | M1 7FS

Freephone: 0800 886 100 | Website: www.hilti.co.uk

LEGAL NOTICE: This template contains Hilti Intellectual Property which is legally protected, including Community registration of Hilti trademarks. For use only by Hilti customers and in conjunction with Hilti products. No third party use/products is authorised and breaches Hilti's intellectual property rights. Hilti accepts no responsibility for unauthorized use and reserves all rights to take legal action to enforce its rights in law.